

# Socio-Economic Geographical Factors of Geocriminogene Status of Syrdarya Region

<sup>1</sup>Karshibaeva Lolakhon Klichevna and <sup>2</sup>Egamkulov Khusniddin Erkaboy o'g'li

<sup>1</sup>Gulistan State University, Head of the Department of Ecology and Geography  
Candidate of Geographical Sciences, Associate Professor

<sup>2</sup>Gulistan State University, 2nd-year master's degree

**Annotation:** The article provides some information about the geocriminogenic situation in the Syrdarya region, the socio-economic factors affecting it, the types of crime, the dynamics.

**Keywords:** Geocriminogenic situation, crime, socio-economic factors, drug addiction, national composition.

## 1. INTRODUCTION

It is not advisable to set preventive measures in a particular area without a thorough analysis of the crime situation and the factors that affect it. Professor A. Soliev, who was the first to introduce the concept of "geo-criminogenic situation" in geography, gave a detailed explanation of the concept of the geo-criminogenic situation. "The geo-criminogenic situation as an important part of social geography studies the conditions and factors influencing crime in different countries or regions, the regional features of the criminogenic situation" Moreover, the geo-criminogenic situation can be understood as the crime rate of a particular region.

The best coverage of the geo-criminogenic situation is ensured by grouping urban and rural areas and analyzing the crime structure within each territorial unit. Because there are different forms of crime in cities and villages of different sizes. In particular, the highest crime rate was found in Tashkent and the lowest in the Republic of Karakalpakstan in various forms of crime. [1]

In the Syrdarya region, too, the geo-criminogenic situation is different, and we can see that the number of serious crimes increased from 158 to 207 in the last 10 months of 2020 compared to 2019.

The table showing the geo-criminogenic situation in the Syrdarya region shows that the number of economic crimes is actually increasing (*Table 1*).

**Distribution of crimes by type of crime in the Syrdarya region for 2017-2020**

Nº	Indicators	2017-year	2018-year	2019-year	2020 year 10 months
1	Serious crimes	213	147	158	207
2	Mild bodily injury	46	6	6	30
3	Economic crimes	357	237	306	373
4	Crimes committed by women	304	133	130	101
5	Number of crimes committed by minors	34	22	15	11

Source: Information of the Syrdarya Regional Department of Internal Affairs [2].

There are gender differences in the crimes committed in the Syrdarya region, with the majority of crimes being committed among men. The crime rate among women is declining. We also see a significant decrease in juvenile delinquency. The number of serious crimes is on the rise between 2018 and 2020. At the same time, we can see that economic crimes also increased from 237 to 373 in 2018-2020.

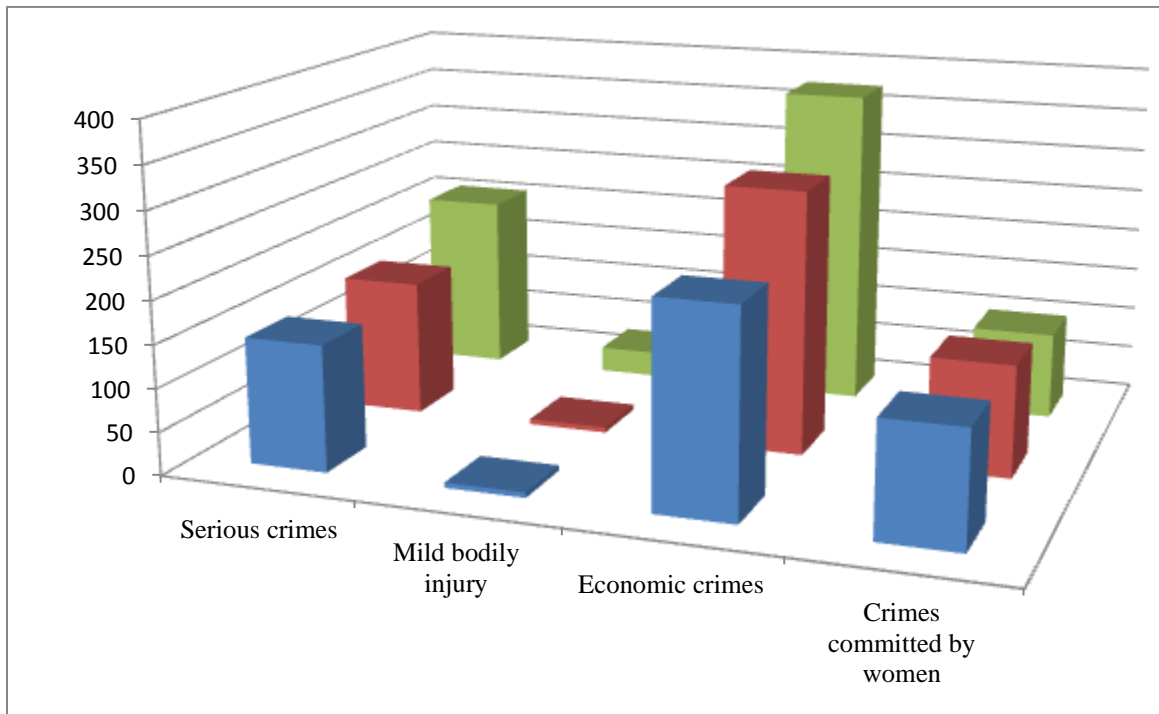
The geo-criminogenic situation not only studies the regional characteristics of crime but also its occurrence in the regions at different seasons and times of the year, the socio-demographic composition of offenders and the conditions and causes of certain types of crime [3].

It should be noted that although the demographic situation in the Syrdarya region is small, the geo-criminogenic factors are as follows. The population density is quite high and is not typical of a traditional desert zone.

Figure 1

**Dynamics of crime in Syrdarya region in 2018-2020:**

The drawing was prepared by the author on the basis of statistical data.



It should be noted that the Syrdarya region is the only region in the country where the population is mainly affected by migration. In the early years of the last century, Russian citizens moved here. The population of the Syrdarya region is quite "dynamic" - mobile. Arrival rate, especially in Gulistan (12-16 per day); In the city of Shirin, the figure is much higher. The main reason for the positive changes is the high level of urban infrastructure and the availability of convenient facilities. The ethnic origin of the population of the region also depends in part on these demographic

factors. In addition to Uzbeks, Kazakhs, Tajiks, Russians, Tatars and other nationalities live in the region. [1]

In the Syrdarya region, as a result of these factors, various crimes are committed. This figure is also reflected in the national team.

**The following socio-economic factors contribute to the geo-criminogenic situation:**

The number of drug-related crimes increased between 2017 and 2018 in Gulistan, Yangiyer and Khavas districts, which have different ethnic composition. In Gulistan, the figure is 19-20, in Yangiyer it is 11-14, and in



Khavas district it is 11-11.

## 2. CONCLUSION

In short, it is expedient to take measures to prevent some criminogenic cases in the Syrdarya region.

## 3. References

1. Komilova N.Q., Egamqulov H.E. Abstracts of VI international scientific and practical conference February 5-7, 2020 Liverpool 2020. 180-b.
2. Sirdaryo viloyati IIB ma'lumoti 2020.
3. Egamqulov H.E. Инновационное развитие науки и образования. Международная научная практическая конференция 429-b