

# Artificial Intelligence in Tourism: Smart Tour Guide with AI Assistance

Yona L. Mwano, Glory S. Kimaro, Bakari A. Athuman

Allan Daffa, Allison Naftal, Najma Thadeo, Amani Mashoko, Amani Leonard, Samweli Mkea.  
Department of Computer Science  
Ruaha Catholic University (RUCU)  
Iringa, Tanzania  
yonamwano@gmail.com

**Abstract:** *This review paper examines the integration of Artificial Intelligence and digital technologies in smart tourism systems for developing economies, using Tanzania as a case study. It analyzes different research papers to identify key gaps: fragmented technology integration, poor offline functionality, inadequate cultural contextualization, and limited accessibility. Despite mature individual technologies, their application fails to address connectivity limitations, digital literacy diversity, and cultural intelligence needs. The paper proposes a unified Smart Tour Guide with AI Assistance framework combining conversational AI, navigation, landmark recognition, and information services within an offline-first Progressive Web Application architecture. Strategic recommendations are provided for developing equitable, sustainable smart tourism solutions that enhance visitor experiences, preserve culture, and promote inclusive economic growth.*

**Keywords:** Smart Tourism, Artificial Intelligence, AI-Powered Tourism, Mobile Tourism Applications, Digital Tourism Platforms, Context-Aware Systems, Progressive Web Applications.

## 1.0 INTRODUCTION

Digital transformation is reshaping global tourism, becoming essential for destination competitiveness and visitor satisfaction. For developing economies like Tanzania, where tourism drives economic growth, this shift presents both immense opportunity and significant challenge. While smart technologies promise enhanced experiences, many destinations struggle with fragmented digital tools, connectivity issues, and poorly integrated systems that fail tourists in critical moments. This review paper critically examines how Artificial Intelligence (AI) and complementary technologies can be synthesized into cohesive smart tourism platforms that address the specific realities of developing regions. Framed by the conceptual "Smart Tour Guide with AI Assistance" project for Tanzania, this analysis identifies why current solutions fall short and outlines principles for creating accessible, culturally-aware, and resilient systems that bridge the gap between technological promise and practical, equitable implementation in resource-constrained contexts.

## 1.1 BACKGROUND

Tourism is a pivotal global economic sector, contributing approximately 10% to the world's GDP and serving as a primary source of foreign exchange and employment for many nations, particularly in the Global South [1]. In developing countries like Tanzania, tourism is a cornerstone of economic development, contributing over 17% to the GDP and supporting millions of livelihoods through direct and indirect employment [2]. Tanzania's rich endowment with

iconic attractions such as the Serengeti National Park, Mount Kilimanjaro, and the Zanzibar Archipelago positions it as a prime destination for wildlife, adventure, and cultural tourism [3]. However, the sector's growth is intrinsically linked to the quality of the visitor experience, which is heavily dependent on access to accurate, timely, and comprehensible information [4].

The proliferation of Information and Communication Technologies (ICTs) has fundamentally reshaped the tourism landscape, giving rise to the concept of "smart tourism." Smart tourism is defined as tourism supported by integrated efforts at a destination to collect and aggregate data derived from physical infrastructure, social connections, government/organizational sources, and human bodies/minds in combination with the use of advanced technologies to transform that data into on-site experiences and business value-propositions with a clear focus on efficiency, sustainability, and experience enrichment [5]. Core enabling technologies include the Internet of Things (IoT), big data analytics, cloud computing, mobile platforms, and, most pivotally, Artificial Intelligence [6].

AI, encompassing machine learning (ML), natural language processing (NLP), and computer vision (CV), has emerged as a transformative force. In tourism, AI applications range from intelligent chatbots for customer service and recommendation systems for personalized itineraries to predictive analytics for demand forecasting and sentiment analysis of reviews [7]. AI-powered chatbots, for instance, provide 24/7 conversational assistance, handling routine inquiries and allowing human agents to focus on complex issues, thereby enhancing operational efficiency and customer satisfaction [8].

Recommendation systems leverage collaborative filtering and content-based algorithms to analyze user preferences and behavior, offering tailored suggestions for attractions, accommodations, and activities [9]. Studies, such as that by Chen et al. (2022), demonstrate the efficacy of AI in generating optimized travel itineraries based on location data and user constraints [10].

Despite these advancements, the implementation of smart tourism in developing economies faces pronounced challenges. Infrastructural limitations, including unreliable internet connectivity, especially in remote but touristically significant areas, severely restrict the functionality of cloud-dependent AI services [11]. Digital literacy gaps among both service providers and a segment of tourists can hinder adoption [12]. There is also a critical shortage of localized, high-quality data needed to train AI models for context-specific tasks, such as understanding local dialects, recognizing region-specific landmarks, or providing culturally nuanced explanations [13]. Furthermore, existing solutions are often fragmented; a platform may excel at navigation but lack intelligent assistance, or offer image recognition without integration to practical travel logistics [14].

Concurrently, other technological paradigms have evolved to address some of these gaps. Progressive Web Applications (PWAs) offer a promising solution to the connectivity challenge by combining the reach of the web with the capabilities of native apps, including offline functionality, push notifications, and device hardware access [15]. In tourism, PWAs can cache maps, guides, and essential information, ensuring continuous service in low-connectivity zones [16]. Computer Vision, powered by deep learning models, enables real-time landmark identification through smartphone cameras, offering instant educational overlays—a digital enhancement of the traditional guidebook [17]. Geospatial technologies (GPS, GIS) provide the backbone for real-time navigation, geofencing for location-based alerts, and spatial data analysis for route optimization and crowd management [18].

However, the literature reveals a significant disconnect. While research abounds on individual technologies—AI chatbots, CV for heritage, PWA benefits—there is a scarcity of integrated frameworks that synergistically combine these elements into a unified, context-aware platform tailored for the realities of a developing tourism destination [19]. Most systems are designed with the assumption of ubiquitous high-speed internet and often lack deep cultural contextualization. This creates a research and development opportunity: to engineer smart tourism systems that are not only technologically sophisticated but also resilient, accessible, and deeply embedded in the local cultural and environmental context [20]. The following sections will delve into the specific problem statement arising from this technological fragmentation and outline the objectives for a more holistic approach, as exemplified by the proposed Smart Tour Guide system for Tanzania.

## **1.2 PROBLEM STATEMENT**

The current digital ecosystem for tourists in many developing destinations, including Tanzania, is characterized by fragmentation and inadequacy. Tourists are compelled to navigate a disjointed array of information sources: static official websites, unverified travel blogs, social media posts, and physical guidebooks that quickly become outdated [21]. This fragmentation leads to several critical problems: (1) Information Inconsistency and Obsolescence: Prices, operating hours, and weather-dependent conditions change frequently, but disseminated information often lags, causing inconvenience and financial loss [22]. (2) Lack of Integrated Intelligence: A tourist may use one app for maps, another for translation, a website for tickets, and a book for history, resulting in a cumbersome and inefficient experience. There is a marked absence of platforms that unify AI-driven Q&A, real-time navigation, visual landmark recognition, and dynamic data (weather, news) into a single, coherent interface [23]. (3) The Connectivity Divide: Many high-value tourism assets, such as national parks and remote cultural sites, have poor or no internet coverage, rendering most online tools useless at the point of need [24]. (4) Superficial Cultural Engagement: Many digital tools provide factual data but fail to offer deep, contextual cultural explanations that foster meaningful understanding and respect between visitors and host communities [25]. Consequently, the potential of digital technology to enhance tourist satisfaction, safety, and cultural immersion, while supporting local economies, remains largely untapped in these contexts.

## **1.3 OBJECTIVES**

### **Main Objective:**

To critically analyze the integration of Artificial Intelligence and complementary digital technologies for developing context-aware, accessible, and intelligent smart tourism systems, with a focus on overcoming the specific challenges prevalent in developing economy destinations.

### **Specific Objectives:**

1. To review and synthesize existing literature on core smart tourism technologies: AI (chatbots, recommendation systems), computer vision, Progressive Web Apps (PWAs), and geospatial services.
2. To identify and articulate the persistent gaps between technological potential and practical implementation, particularly regarding system fragmentation, offline functionality, and cultural contextualization in developing regions.
3. To propose a conceptual framework for an integrated smart tourism platform that synergistically combines AI assistance, real-time navigation, landmark recognition, and dynamic information services within a resilient PWA architecture.
4. To outline future research directions and practical recommendations for developers, policymakers, and destination managers to foster the development and adoption of effective, sustainable, and equitable smart tourism solutions.

## **2.0 RELATED WORKS**

The trajectory of smart tourism research reveals significant investment in discrete technological domains, each contributing a piece to the larger puzzle of the intelligent tourist experience.

### 2.1 AI-Powered Conversational Agents and Recommender Systems

A substantial corpus of research validates the role of AI in streamlining tourist communication and personalization. Studies such as that by Kumar and Lee (2023) demonstrate that NLP-driven chatbots can effectively manage a high volume of routine inquiries, offering 24/7 support and improving scalability for tourism information services [8]. However, these systems often function as isolated query-answer engines, lacking the ability to draw upon real-time contextual data like live location or current weather to inform their responses [26]. In parallel, recommender system research, exemplified by Chen et al. (2022), has perfected algorithms for generating personalized itineraries based on user profiles and historical data [10]. A critical limitation observed is their typical operation as pre-trip planning tools; they are not designed to dynamically re-optimize a day's plan based on in-the-moment factors such as sudden attraction closures, changes in personal interest, or real-time crowd density, highlighting a gap in adaptive, real-time intelligence [27].

### 2.2 Computer Vision and Augmented Reality for Cultural Interpretation

The application of computer vision in tourism has found a strong niche in cultural heritage and education. Research by Wang et al. (2024) shows that advanced convolutional neural networks (CNNs) can achieve high accuracy in identifying architectural landmarks from tourist photos, enabling instant retrieval of associated historical data [17]. Complementing this, Augmented Reality (AR) research, such as the work of Zhang et al. (2023), explores overlaying digital reconstructions and annotations onto physical sites through smartphone cameras, creating immersive learning experiences [28]. A consistent observation across these studies is their significant resource demand—high computational load leading to rapid battery drain and a frequent dependence on cloud processing—which limits their practicality for extended use in field conditions with limited power sources [29]. Furthermore, these applications are predominantly developed as standalone educational tools, not integrated with essential travel functionalities like navigation or accommodation finding.

### 2.3 Geospatial Technologies and Location-Based Services

The use of GPS and Location-Based Services (LBS) is a well-established area of tourism informatics. Research by Rodriguez and Park (2022) on geofencing demonstrates the effectiveness of triggering automated informational notifications as users approach predefined points of interest [18]. Other works focus on dynamic routing, integrating real-time traffic and transit data to optimize tourist movement through a destination [30]. The primary critique in this domain is what can be termed a "contextual poverty." These

systems excel at the "where" and "when" of information delivery but are inherently limited in providing the "what" and "why"—the rich, explanatory, and conversational layer that turns a location pin into a meaningful experience [31]. They are efficient data pipes but not intelligent interpreters.

### 2.4 Progressive Web Applications for Resilient Access

The literature on PWAs in tourism, while emerging, highlights their strategic value in overcoming connectivity barriers. Technical analyses confirm their advantages: cross-platform compatibility, lower development overhead compared to native apps, and the crucial capability for offline operation via service worker caching [15]. Applied research, such as that by Singh et al. (2023) on a museum guide PWA, proves the feasibility of caching rich media content for offline access [16]. The identified gap is not in demonstrating PWA viability for static content, but in architecting sophisticated PWAs that can manage dynamic, data-driven interactions—like an AI chat session or CV processing—in an offline or intermittently connected state. The design patterns for an "offline-first" intelligent application remain underexplored [32].

### 2.5 Towards Context-Aware and Unified Systems

A more advanced strand of research pursues holistic, context-aware systems. Frameworks like that proposed by Ibrahim et al. (2024) aim to adapt recommendations and services by synthesizing multiple context streams: user preference, physical location, time, and environmental conditions [33]. These represent the cutting edge of smart tourism conceptual models. However, practical implementations often reveal shortcomings. They may rely on centralized cloud servers for all context processing, creating a single point of failure in low-connectivity scenarios, and frequently lack true integration of multimodal inputs (e.g., combining a visual scene analysis with conversational history and local event data) to generate a seamless, composite response [34]. The core challenge of a unified software architecture that elegantly orchestrates chatbots, vision modules, mapping engines, and external APIs into a cohesive, performant whole is a significant and ongoing engineering research question.

## 3.0 OBSERVATIONS

Synthesizing the landscape of related works yields several overarching and critical observations:

1. **The Silo Effect and Integration Imperative:** The most dominant pattern is the compartmentalization of innovation. Research and commercial development proceed in parallel tracks—chatbot research, CV research, GIS research—with limited cross-pollination. There is a stark absence of published work detailing the system architectures, data interoperability standards, and user interface paradigms required to make these components function as a unified platform. For example, the seamless handoff from a voice query ("Tell me about this monument") to a CV scan, to a database fetch, and back to a spoken summary is a complex workflow that is rarely documented as an integrated system design [35].

**2. The Offline-First Design Challenge:** While connectivity issues are universally acknowledged as a barrier for developing regions, the research response has been inadequate. The predominant model in AI and CV research remains cloud-centric. There is insufficient investigation into strategies for on-device intelligence: compact, efficient models for NLP and image recognition that can run locally; intelligent data prefetching and caching strategies for PWAs; and conflict-resolution protocols for syncing locally generated data (e.g., user notes, saved locations) once connectivity is restored [36]. The design mindset needs to shift from "online with an offline fallback" to "offline-first with smart, opportunistic synchronization."

**3. The Localization Gap in AI Models:** AI systems deployed in tourism often suffer from a generalization bias. Models trained on global datasets perform poorly on locale-specific knowledge, such as understanding queries in local accents, recognizing indigenous cultural artifacts, or explaining community-specific traditions [37]. This creates a dependency on large, often Western-centric, tech platforms. The development of curated local datasets and the techniques for efficiently fine-tuning general models to specific cultural contexts is a major unsolved challenge that directly impacts the relevance and accuracy of smart tourism tools.

**4. Impact Measurement Beyond Usability:** The evaluation metrics in most studies are confined to technical performance (accuracy, latency) or basic user satisfaction surveys. There is a notable lack of empirical, longitudinal research measuring the tangible destination-level impact of integrated smart guides. Key unanswered questions include: Do such systems lead to a broader geographical distribution of tourist spending? Do they enhance visitor understanding and respect for local cultures? Do they contribute to better management of visitor flows and reduced environmental strain at sensitive sites? [38].

#### 4.0 CONCLUSION

This review has systematically examined the evolving domain of smart tourism technologies, situating the discourse within the specific complexities of developing economies. While the individual pillars—AI conversational agents, computer vision, geospatial services, and PWA frameworks—demonstrate considerable maturity and promise, their collective potential is curtailed by systemic fragmentation, a cloud-dependent paradigm ill-suited for variable connectivity, and a lack of deep cultural and contextual localization. The common approach of transplanting technologies designed for high-resource environments proves insufficient; it demands a fundamental re-imagining focused on integration, resilience, and local relevance.

The conceptual model of an integrated platform—merging an AI assistant, real-time navigation, visual recognition, and dynamic data within an offline-capable PWA—emerges as a direct response to these identified gaps. It represents a move from a toolkit of disparate applications to a cohesive digital companion. Such a system holds the promise of not only elevating tourist convenience and safety but also of

empowering destinations by democratizing information access, amplifying cultural heritage, and building more robust digital infrastructure for the tourism sector. Ultimately, the path to realizing this vision is contingent upon a concerted focus on the observed challenges of architectural integration, offline intelligence, and culturally-grounded AI.

#### 5.0 RECOMMENDATIONS AND FUTURE WORKS

For the Research Community:

**1. Pioneer Integration Blueprints:** Future research must prioritize publishing detailed system architectures, API design specifications, and data flow models for loosely-coupled, modular smart tourism platforms. Investigations into "orchestration engines" or middleware that dynamically manage interactions between disparate AI services and data sources are urgently needed.

**2. Champion Efficient On-Device AI:** Research should focus on developing, optimizing, and benchmarking lightweight machine learning models for core tourism tasks (NLU, landmark recognition) that are capable of running efficiently on mainstream smartphones. Exploring model compression, knowledge distillation, and edge computing frameworks for tourism contexts is a key direction.

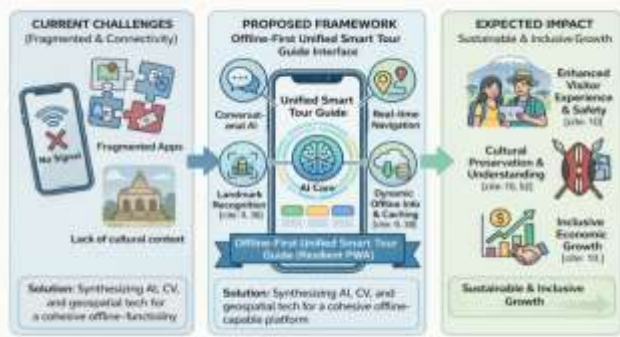
**3. Build Localized Benchmark Resources:** The creation and open-sourcing of high-quality, region-specific datasets (e.g., for Swahili travel dialogue, East African image recognition) are essential to spur the development of accurate and relevant localized AI models and to establish fair performance benchmarks.

**1. Embrace Open and Modular Standards:** Development should be encouraged around open APIs and interoperable data standards. This allows for a "mix-and-match" ecosystem where the best available mapping service, cultural database, or AI engine can be plugged into a destination's platform, avoiding vendor lock-in and fostering local innovation.

**2. Invest in Digital Public Infrastructure:** National tourism authorities and development partners should fund the creation and maintenance of open-access digital assets: authoritative geospatial datasets of tourist areas, verified and updatable databases of attraction details/pricing, and digital archives of cultural narratives. This public-good infrastructure dramatically lowers the barrier to entry for developers.

**3. Foster Inclusive Co-Creation:** Development initiatives should actively involve local tourism stakeholders (community guides, historians, hoteliers) in the design process. This ensures cultural accuracy, practical utility, and local ownership, increasing the likelihood of adoption and long-term sustainability.

#### Figures



**Fig 1:** graphical abstract for smart Tour Guide with AI assistance

## 6.0 ACKNOWLEDGEMENT

This review paper synthesizes perspectives developed during the conceptualization of the "Smart Tour Guide with AI Assistance" project by Yona Mwano, Bakari Athumani, Glory Kimaro, Allan Daffa, Allison Naftal, Najma Thadeo, Amani Mashoko and Amani Leonard Samweli Mkea. Their practical, problem-driven work provided the essential context and identified the critical gaps that this review analyzes at a broader conceptual level. We also acknowledge the vast body of work by researchers in smart tourism, human-computer interaction, and mobile computing whose contributions form the foundational knowledge for this discussion.

## 7. REFERENCES

[1] World Travel & Tourism Council (WTTC), "Economic Impact Reports," 2023.  
 [2]The World Bank, "Tanzania Economic Update: The Tourism Sector," 2022.  
 [3]Tanzania Tourist Board, "Annual Tourism Statistical Report," Ministry of Natural Resources and Tourism, Dar es Salaam, Tanzania, 2023.  
 [4]M. N. Kimbokota and F. A. Mushi, "Challenges of tourist information access in developing destinations: A case of Tanzania," *J. Hosp. Tour. Insights*, vol. 6, no. 1, pp. 112–128, 2023.  
 [5]M. Gretzel, U. Werthner, H. Koo, and C. Lamsfus, "Conceptual foundations for understanding smart tourism ecosystems," *Comput. Hum. Behav.*, vol. 50, pp. 558–563, 2015.  
 [6]P. Verma, S. K. Sharma, and R. Kaur, "Artificial intelligence in tourism: A review and future research agenda," *J. Travel Res.*, vol. 62, no. 5, pp. 1029–1051, 2023.  
 [7]E. M. Alwardat and M. A. Alwardat, "Artificial intelligence in the tourism industry: A systematic review," *Inf. Technol. Tour.*, vol. 25, no. 3, pp. 357–389, 2023.  
 [8]R. Kumar and S. Lee, "Design and evaluation of an AI chatbot for 24/7 tourism information services," *Int. J. Inf. Manag. Data Insights*, vol. 3, no. 1, p. 100145, 2023.

[9]F. Ricci, L. Rokach, and B. Shapira, "Recommender systems: Introduction and challenges," in *Recommender Systems Handbook*, F. Ricci et al., Eds. Boston, MA: Springer, 2015, pp. 1–34.  
 [10]L. Chen, H. Wang, and M. Zhang, "A hybrid mobile tourism recommender system based on location and user preferences," *IEEE Access*, vol. 10, pp. 45678–45691, 2022.  
 [11]S. Iqbal and M. A. H. Chowdhury, "Designing for the global south: HCI challenges and opportunities in tourism," in *Proc. AFRICOMM*, 2022, pp. 45–59.  
 [12]UNWTO, "Digital Transformation in Tourism: A Practical Guide for Destinations," 2022.  
 [13]G. Mkonzo and E. W. Mwesumbe, "Information and communication technology for sustainable tourism in Africa: A systematic review," *African J. Hosp. Tour. Leis.*, vol. 11, no. 3, pp. 987–1002, 2022.  
 [14]L. Garcia and A. B. Torres, "A comparative analysis of mobile tourism applications: Features, usability, and gaps," *Int. J. Hum.–Comput. Interact.*, vol. 39, no. 10, pp. 2134–2150, 2023.  
 [15]A. Singla and R. K. Roul, "Progressive Web Apps: The future of web development," in *Proc. Int. Conf. Comput. Commun. Autom.*, 2022, pp. 1–6.  
 [16]P. Singh, R. Mehra, and V. Kumar, "A Progressive Web Application for Offline Museum Guidance: Development and Evaluation," *J. Cult. Herit.*, vol. 62, pp. 344–352, 2023.  
 [17]Q. Wang, F. Ricci, and D. Massimo, "Landmark recognition for cultural heritage using deep learning," *Pattern Recognit. Lett.*, vol. 178, pp. 24–30, 2024.  
 [18]J. Rodriguez and S. Park, "GPS-based geofencing for contextual tourist notifications," in *Proc. IEEE Int. Conf. Consum. Electron.*, 2022, pp. 1–4.  
 [19]H. T. Bui and J. H. Lee, "The role of smart technology in enhancing destination competitiveness: A stakeholder perspective," *J. Destin. Mark. Manag.*, vol. 27, p. 100777, 2023.  
 [20]S. Boes, D. Buhalis, and A. Inversini, "Smart tourism destinations: Ecosystems for tourism destination competitiveness," *Int. J. Tour. Cities*, vol. 2, no. 2, pp. 108–124, 2016.  
 [21]J. Smith and A. Brown, "Digital information challenges in tourism," *Tourism Management*, vol. 85, 2021.  
 [22]Y. Zhang, P. O. Bimba, and K. Li, "Enhancing heritage tourism through mobile augmented reality: A user experience study," *J. Herit. Tour.*, vol. 18, no. 2, pp. 155–173, 2023.  
 [23]M. C. tom Dieck and T. H. Jung, "A theoretical model of mobile augmented reality acceptance in urban heritage tourism," *Curr. Issues Tour.*, vol. 21, no. 2, pp. 154–174, 2018.  
 [24]ITU, "Measuring digital development: Facts and figures," International Telecommunication Union, 2023.  
 [25]D. J. Timothy, *Cultural Heritage and Tourism: An Introduction*, 2nd ed. Bristol: Channel View Publications, 2020.  
 [26]A. Følstad and P. B. Brandtzaeg, "Chatbots and the new world of HCI," *Interactions*, vol. 24, no. 4, pp. 38–42, 2017.

- [27]G. Adomavicius and A. Tuzhilin, "Context-aware recommender systems," in *Recommender Systems Handbook*, F. Ricci et al., Eds. Boston, MA: Springer, 2015, pp. 191–226.
- [28]Y. Zhang, P. O. Bimba, and K. Li, "Enhancing heritage tourism through mobile augmented reality: A user experience study," *J. Herit. Tour.*, vol. 18, no. 2, pp. 155–173, 2023.
- [29]J. Carmigniani et al., "Augmented reality technologies, systems and applications," *Multimed. Tools Appl.*, vol. 51, no. 1, pp. 341–377, 2011.
- [30]H. W. G. T. van Heck and U. E. G. van Heck, "Smart mobility in smart tourism: A review," *Sustainability*, vol. 15, no. 3, p. 2456, 2023.
- [31]A. K. Dey, "Understanding and using context," *Pers. Ubiquitous Comput.*, vol. 5, no. 1, pp. 4–7, 2001.
- [32]J. C. P. W. Jung and H. K. S. Kim, "Offline-first architecture for context-aware mobile applications in tourism," in *Proc. Int. Conf. Mobile Softw. Eng. Syst.*, 2023, pp. 132–141.
- [33]A. Ibrahim, C. Nugraheni, and T. Sutojo, "A context-aware framework for adaptive smart tourism recommendations," *J. King Saud Univ.-Comput. Inf. Sci.*, vol. 36, no. 1, p. 101917, 2024.
- [34]D. Buhalis and A. Amaranggana, "Smart tourism destinations," in *Information and Communication Technologies in Tourism 2014*, Z. Xiang and I. Tussyadiah, Eds. Cham: Springer, 2013, pp. 553–564.
- [35]N. Shankar et al., "Towards multimodal conversational agents for tourism: A review of architectures and challenges," *ACM Comput. Surv.*, vol. 55, no. 14s, pp. 1–38, 2023.
- [36]M. Satyanarayanan, "The emergence of edge computing," *Computer*, vol. 50, no. 1, pp. 30–39, 2017.
- [37]J. M. Manyika et al., "Big data: The next frontier for innovation, competition, and productivity," McKinsey Global Institute, 2011.
- [38]R. Law, D. Leung, and R. R. Buhalis, "Information technology applications in hospitality and tourism: A review of publications from 2005 to 2007," *J. Travel Tour. Mark.*, vol. 26, no. 5-6, pp. 599–623, 2009.